



## Otic and Auditory Studies

Comparative Biosciences continues to evolve with niche and specialty pre-clinical, IND enabling GLP or non-GLP otic and auditory toxicology, efficacy, pharmacokinetics/pharmacodynamics in relevant animal species. We have experience with:

- Tympanic membrane perforation
- Bacterial and fungal infections
- Aminoglycoside injury
- Acoustical hearing loss
- Parasitism

[Please visit our website to learn more!](#)

## Partnership with Dr. Jeremy Turner

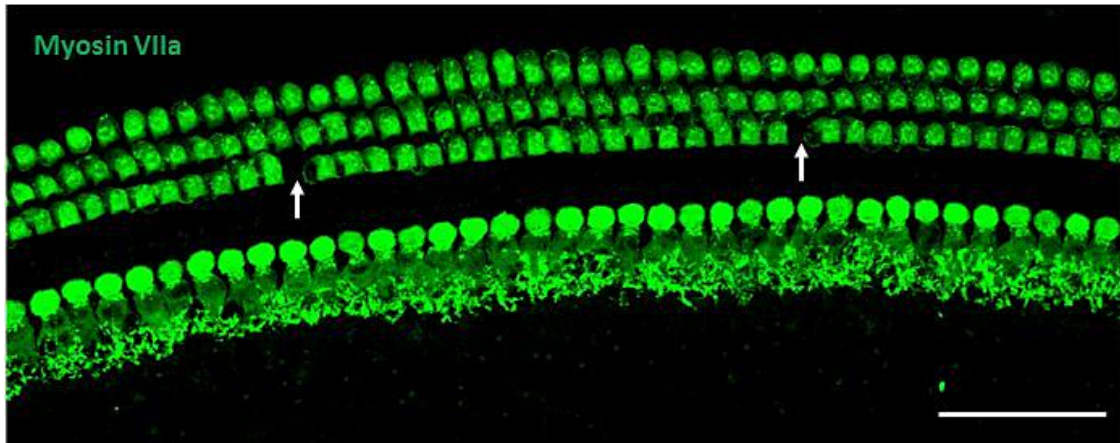
Along with esteemed hearing scientist Dr. Jeremy Turner of Turner Scientific, CBI has developed specialized surgical procedures and exams, including auditory

brain response assessments. We have experience in a number of species including guinea pigs, mini pigs, and chinchillas.

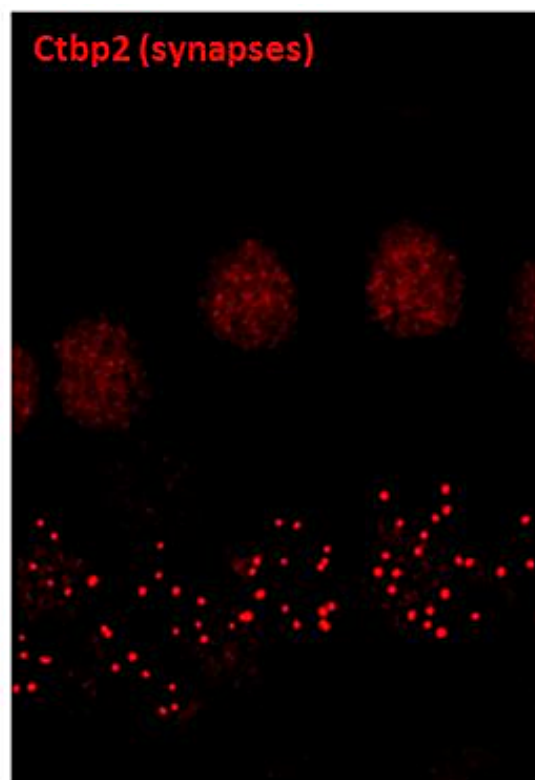
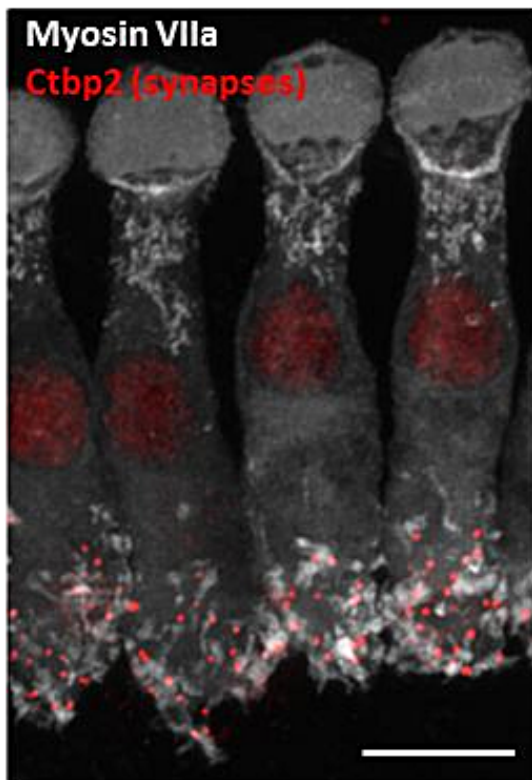
[Check out Dr. Turner's website here](#)

## Cytocochleograms and Otic Histopathology

CBI has developed sensitive and specialized methods for auditory efficacy and safety measurement. Our in-house histopathology laboratory also offers immunohistochemistry, histomorphometry, and digital image analysis capabilities.



Arrows denote missing outer hair cells



# Need to conduct a study?

Talk to us today

[www.compbio.com](http://www.compbio.com)

Comparative Biosciences, 786 Lucerne Dr., Sunnyvale, CA 94085

[SafeUnsubscribe™ {recipient's email}](#)

[Forward this email](#) | [Update Profile](#) | [About our service provider](#)

Sent by [sales@compbio.com](mailto:sales@compbio.com) in collaboration with

**Constant Contact** 

Try it free today