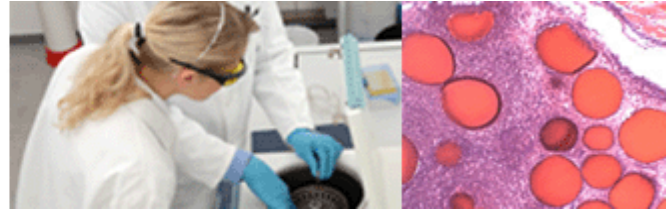




## CBI News



The Reliable Resource for the  
Biomedical Community

March 2011

Featured Histology Capabilities at  
CBI

[Articular cartilage repair -  
histologic assessment with special  
stains, IHC and Driscoll type  
assessment](#)

[Tissue Cross Reactivity \(GLP and  
nonGLP\)](#)

[Complete human and animal  
tissue bank and tumor bank for  
IHC studies](#)

[Immunohistochemistry](#)

....

For more information, contact  
Mike Zamora at  
[mike\\_zamora@compbio.com](mailto:mike_zamora@compbio.com)

Quick Links

[Contact Us](#)  
[Our Website](#)  
[About CBI](#)

[Join Our Mailing List!](#)

Comparative Biosciences, Inc.  
786 Lucerne Drive  
Sunnyvale, CA 94085

Phone: 408.738.9260  
Fax: 408.738.9278

Visit our Booth at ARVO 2011 in Fort Lauderdale!  
Booth #203 May 1st-May 4th

CBI congratulates AREVA Med on its successful IND and  
entry into Phase I alpha radioimmunotherapy clinical trial  
with  $^{212}\text{Pb}$ .

## 2011 SOT Convention

The 50<sup>th</sup> Anniversary Gala for the SOT was held in Washington DC this past month. There were over 7500 attendees. It is hard to believe that we have all been at our beloved profession for nearly 5 decades! Of particular interest to us was the TCR Round Table featuring input from both the FDA and experts in TCR and monoclonal antibody development.

As usual, there was a small mob of SHAC demonstrators screaming into bull horns and waving video cameras at the main entrance at lunch, end of the day and prior to the Gala Party. The SOT Security detail and Washington DC police department did an excellent job protecting the SOT membership from harassment by these demonstrators. The cost of maintaining a security detail at the SOT, or any other meeting, is formidable and is estimated to be in the \$50-75K range just for a single meeting alone. As an industry and a scientific body, we all need to take a serious look at what animal rights groups are costing us, as direct costs, hidden costs, wasted time, lost opportunity costs and emotional toll. We have to stop pandering to the animal rights groups.

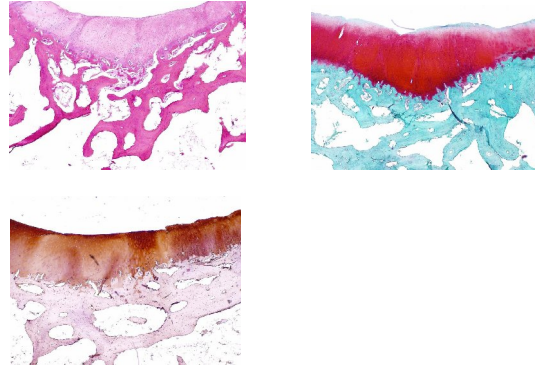
There was a Gala Party, featuring "Beatlemania Live"-a terrific tribute band complete with Beatle costumes, memorabilia and Go Go dancers. It was so much fun, and everyone danced the night away. Perhaps the SOT should consider a 1970's dance party at San Francisco in 2012 complete with hippy regalia! Alternatively, we could celebrate "Do You Know the Way to San Jose?" (CBI is right on the way) or disco (it's fun to stay at the YMCA!).

## Articular Joint Cartilage Repair Models

Osteo-arthritis is a painful debilitating disease for which there is no adequate treatment. Animal models generally revolve around creating a cartilage defect and applying treatment with a detailed histopathologic assessment of the defect repair. Rabbits and goats

are the most common species examined. Stem cell applications and various biologics are of particular current interest.

Histopathology is key to assessment of efficacy in these models. McNeal's tetrachrome with toluidine blue, Safranin O, Von Kossa, and Goldner's trichrome stains are commonly used in conjunction with hematoxylin eosin effectively, along with digital histomorphometry and immunohistochemistry. Histologic assessment includes a scoring system such as the O'Driscoll International Cartilage Repair Society Grading System. Immunohistochemistry is commonly used and includes beta-2 microglobulin, collagen, chondromodulin, VEGF, and others. Below is an HE, Safranin O, and Collagen Type II used in an articular lesion in a goat.



**For information on pre-clinical ophthalmic pharmacokinetics, efficacy modeling and toxicology services offered at CBI, contact Mike Zamora, Business Development Manager**

Tel: 408-738-9265

Email: [mike\\_zamora@compbio.com](mailto:mike_zamora@compbio.com)