



COMPARATIVE BIOSCIENCES, INC.

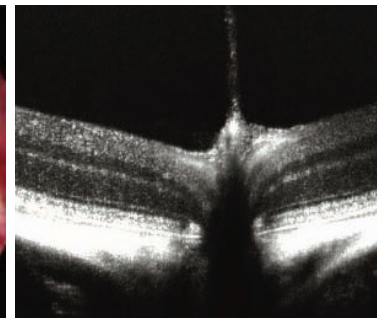
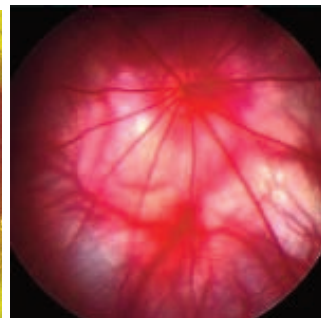
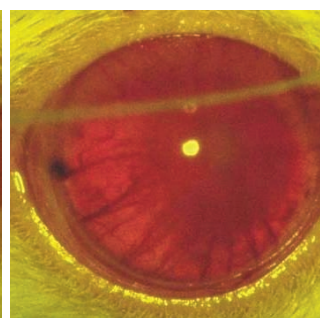
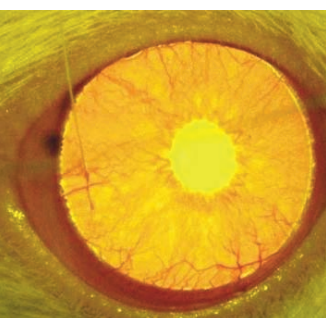
A TRANSLATIONAL APPROACH TO PRECLINICAL RESEARCH



Melanin Associated Antigen

CBI is offering for the month of September/October MAA Ocular INFLAMMATION modeling in rats that recapitulates the human disease of Anterior Uveitis. We spent several years developing the antigen and then validating and optimizing the INFLAMMATION. The result is a solid, predictable model that can be used to test anti-inflammatories and immunomodulators. This model is far more predictable and reliable than S antigen or IRBP model that produces inflammation in the posterior segment. (we also conduct this model)

[SEE STORY](#)



Normal rat eye, Grade 4 inflammation following MAA treatment

Brightfield

Optical Coherence Tomography
OCT

A TYPICAL STUDY DESIGN:

- Ten Lewis rats per group, vehicle, test article at 2-3 dose levels, positive control of topical dexamethasone or systemic cyclosporine
 - Induce INFLAMMATION with MAA injection
- Slit lamp scoring of INFLAMMATION in anterior segment 3x weekly for four weeks
 - Weekly body weights
 - Necropsy with histopathologic examination of eye
 - Complete report

For Ocular Research and Toxicology, we are now offering OCT intraocular assessments as well as IOP, ERG, and angiography.

Contact us for more information and validation data.

[CLICK HERE: Melanin Associated Antigen](#)

[CLICK HERE: Optical Coherence Tomography](#)

[CLICK HERE: Antibacterial Research & Consulting](#)