



## COMPARATIVE BIOSCIENCES, INC.

A TRANSLATIONAL APPROACH TO PRECLINICAL RESEARCH



# Pre-clinical Studies in Atherosclerosis

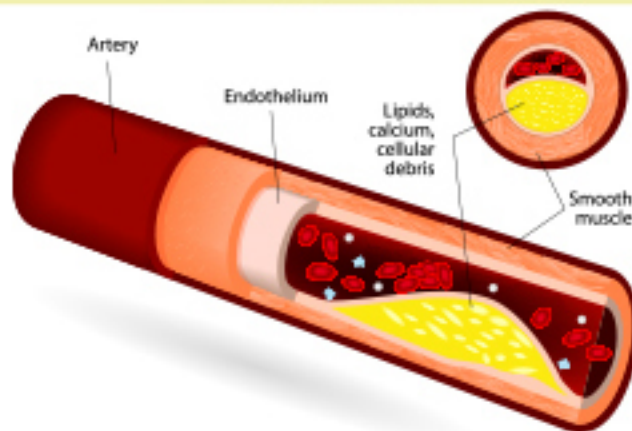
ATHEROSCLEROSIS IS PRESENT IN NEARLY 52% OF AMERICANS AND REPRESENTS A HUGE UNMET MEDICAL NEED.

Atherosclerosis occurs when fat, cholesterol, and other substances build up in the walls of arteries and form hard structures called plaques. Over time, these plaques can block the arteries, causing problems throughout the body. This slow plaque buildup in arteries over time is a progressive disease called atherosclerosis, which can lead to serious problems, including heart attack, stroke, or even death.

**For companies investigating this disease and its associated symptoms, CBI offers efficacy models in:**

- **Progression and Regression Studies in Mice**
- **Hyperlipidemia in Watanabe Rabbits**
- **Hyperlipidemia in High Fat-Fed Hamsters or Guinea Pigs**
- **Diet Induced Obesity (DIO) in Mice**
- **Hypertensive Rat Model**
- **Myocardial Infarction Model**
- **Angioplasty Model**
- **STZ Diabetic Model in Rats**

### ATHEROSCLEROSIS



**Contact us for more information on Atherosclerosis Studies.**

Leslie Nemeth at: [408-738-9263](tel:408-738-9263) • email: [leslie\\_nemeth@compbio.com](mailto:leslie_nemeth@compbio.com)

[CLICK HERE:  
Atherosclerosis Studies](#)

[CLICK HERE:  
Pharmacology](#)

[CLICK HERE:  
Antibacterial Research & Consulting](#)