



COMPARATIVE BIOSCIENCES, INC.

A TRANSLATIONAL APPROACH TO PRECLINICAL RESEARCH

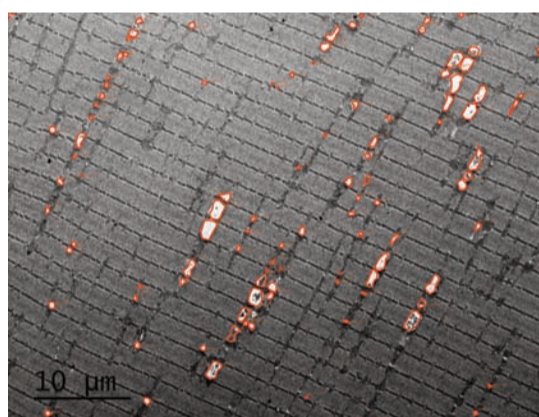


Pompe Disease

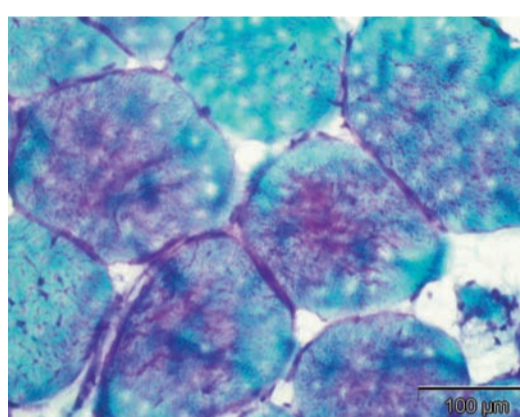


Pompe disease is caused by pathogenic variations in the acid alpha-glucosidase (GAA) gene. Close to 500 different GAA gene variations have been identified in families with this disorder.

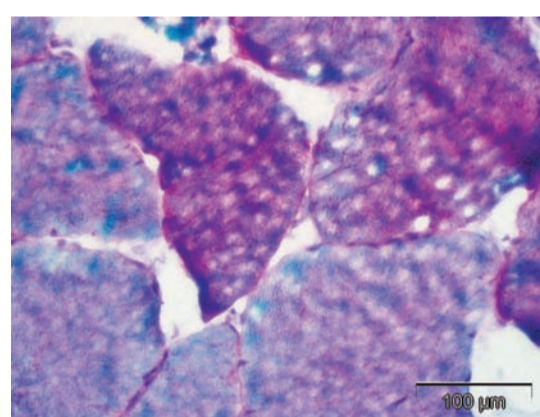
Below are some representative histology, thin sections and TEM of GSD specimens that we prepared and evaluated in our laboratories. Digital image analysis and histo-morphometry were conducted on the TEM samples below.



TEM micrograph showing ultrastructural changes in the lysosomes typical of Pompe's Disease.



PAS on ultrathin plastic sections of a Pompe's patient.



PAS on ultrathin plastic sections of a severely affected Pompe's patient

Glycogen Storage Disease

Histopathology on Human Muscle Biopsies from patients affected with a Glycogen Storage Disease.

Glycogen Storage Diseases are devastating, rare orphan diseases for which there is no cure and treatment regimes are suboptimal. The two most common ones are Von Gierke's and Pompe's disease. Myozyme and Lumizyme are two approved treatments for Pompe's (Sanofi-Genzyme) that are somewhat effective, but not curative.

Here at CBI we have had the privilege to work on a clinical product for a Glycogen Storage Disease in which we developed unique methods and conducted histology, developed a very high quality PAS EPON method to stain thin section muscle biopsies and conducted transmission electron microscopy on patient samples.

- CUSTOM UPON REQUEST -

NEED TO CONDUCT A STUDY? Click here and check out our website. www.compbio.com

Be sure to check out the movie:
EXTRAORDINARY MEASURES

The film is about parents who form a biotechnology company to develop a drug to save the lives of their children, who have a life-threatening disease. The film is based on the true story of John and Aileen Crowley, whose children have Pompe's disease.

COMPARATIVE BIOSCIENCES, INC.

786 Lucerne Drive • Sunnyvale, California 94085 • Telephone: 408-738-9260